

M A Y 2 0 2 2

# Smoky Mountain Woodturners



## Chapter of the Association of American Woodturners (AAW)

The Smoky Mountain Woodturners Chapter of the AAW meets each month of the year on the 3<sup>rd</sup> Tuesday of the month starting at 6:30 pm.

Our meetings are in person and on ZOOM. To attend zoom, visitors should send their email address to [jevogelsang@charter.net](mailto:jevogelsang@charter.net). Guests are always welcome.

**The June meeting will be our Annual Wood Auction, with simultaneous Zoom.** Meetings start at 6:30 pm at Woodcraft Knoxville (our sponsor). The location is 8023 Kingston Pike in Knoxville, near Trader Joe's and one block from West Town Mall.

President: Don Adams

P. O. Box 50141

[don-adams@tds.net](mailto:don-adams@tds.net)

Newsletter Editor: Pauline Bayne

[paulinebayne@comcast.net](mailto:paulinebayne@comcast.net)

**Send \$30 annual dues to:**

**SMWTS Treasurer**

**P. O. Box 50141, Knoxville,  
Tennessee 37950-0141**

### **Going to the Chattanooga AAW Symposium in June?**

Please think about doing a brief write-up of your favorite demo, vendors, or other experience to share in our Newsletter. Photos would be really great. Please send your thoughts/pics to: [paulinebayne@comcast.net](mailto:paulinebayne@comcast.net)



About 20 members at Wood Craft and about 20 on Zoom.

### **Dick Hoffmann: A Clovis Vase—Not Round, Not Twisted**



See pages 6-7 for details

Handout posted on [SMWTS.org](http://SMWTS.org) / Videos & Handouts

## Turners – Can you offer assistance?



**Ed Cloud (Knoxville Disabled Veteran)** had his cane stolen recently. He is in need of a replacement and was asking if anyone in the club could help in making a new one. He is looking for a 35-36" length with a Brass knob on the top. His phone number is **865-283-1666**. He would certainly appreciate someone's help.

## Officers



**Don Adams**  
President



**Jack Harris**, Treasurer



**Andy Milligan**  
Vice President



**Scott Duncan**, Secretary

## Board of Directors

**Don Adams**, President 2021-22  
**Andy Milligan**, Vice President 2022-23  
**Scott Duncan**, Secretary 2021-22  
**Jack Harris**, Treasurer 2021-22  
**Dick Hoffman**, 2021-23

### Members-at-Large

**John Jordan** 2022-23  
**Larry Green** 2021-22  
**Frank Huscroft** 2022-23  
**Ron Comtois** 2022-23  
**Dick Hammat**, Past President 2020-2022  
 non-voting member

## Special Assistants to the Board

Website -- Jim Vogelsang  
 Newsletter Editor -- Pauline Bayne  
 Video/Zoom -- Jim Vogelsang &  
 Andy Milligan  
 Program Director -- Dick Hoffmann

## Special Projects

Fantasy of Trees -- Don Adams & Jim Vogelsang  
 Beads of Courage & Wig Stands -- Drue Hogland  
 Pens for Troops -- Randy Fritchman  
 Education -- WVR Project -- Bob Law  
 Mentoring -- Don Adams  
 Arts in the Airport -- Robert Brown  
 Blount Mansion Project -- Ed Lewis  
 SMWTS Display at Emporium -- Brian Horais

**AAW:**  
 Symposiums, demonstrations, THE source for  
 woodturning information  
[www.woodturner.org](http://www.woodturner.org)  
 If you are not an AAW member, please  
 consider joining



## President's Letter -- Don Adams

Hallelujah!! After over two years of club Zoom meetings, we had a hybrid in-person/Zoom meeting for May. We had about 20 people in the room and about the same number using the convenience of Zoom. It was good to see those who came, and I appreciate those on Zoom. Jim Volgesang arranged the Zoom meetings that we've been having. He brought equipment, and with help from Andy Milligan, designed, set up, and made all the connections to provide for the simultaneous Zoom and in-room meeting at Woodcraft. It's a complex system with multiple cameras, wireless microphones, audio and video controllers, speakers, and more. Jim is really good with those things, and we certainly appreciate all of his hard work. Let's hope that Covid stays at bay in Knox County so we can continue hybrid meetings.



We had another informative demonstration with Dick Hoffmann showing us how to make a clovis vase, not round and not twisted. It was certainly a unique and beautiful piece that Dick created.

*It's important that you post on the website anything for Show and Tell.* By doing that, the photos and information can be included in the newsletter and everyone gets to see your work. Please help us with this because several of those that were brought to the meeting but not posted were not captured for the newsletter. It's difficult to get a decent video camera shot on the fly.

For the June meeting, we will have our long awaited "annual" wood auction. Please bring wood, tools, accessories, etc. to donate to the club and put up for auction. Of course, you'll need to attend the meeting at Woodcraft or make other arrangements to get your donations to the meeting. Also, in order to pick up any winning bids, you will have to be at Woodcraft to collect your items. Unfortunately, we won't be able to take bids from those participating on Zoom. We expect a large turnout with lots of good stuff up for bid.

See you at the wood auction June 21!

### Project Reports:

Drue says, please bring on more **Beads of Courage Boxes & Wig Stands!**

Randy has **pen kits**, wood blanks or some already drilled up & extra mandrels. Email him with what you need.

**Fantasy of Trees** – wood is available to make ornaments or anything else for the November charity event to raise funds for Children's Hospital.

**SEE SMWTS.ORG FOR ITEMS FOR SALE & PROJECT WOOD.**



## SMWTS Meeting Calendar

January 19	<i>Dick Hoffmann</i> -- Segmented Turning
February 15	<i>John Lucas</i> -- Box Turning
March 15	Turning Miniatures -- <i>Chris Campbell</i>
April 8-10	Arrowmont Wood Weekend
April 19	Threaded Lidded Box -- <i>Ron Comtois</i>
May 17	Turning a Clovis Bud Vase, not round, not twisted -- <i>Dick Hoffmann</i> -- at Woodcraft & Zoom

**June 21** **Annual Wood Auction-- at Woodcraft & Zoom**

July 19

August 16

September 20

October 18

November 15

December 17

HELP US FILL IN THIS CHAPTER  
CALENDAR!  
Please contact Dick Hoffmann (use the  
email link on our website members' list)

2022 Board Meetings: January 5 / April 6 / **July 6** / October 5

## 2022 AAW Symposium, Chattanooga

June 23-26, 2022

3 ½ days and over 100 demonstrations

**When** 6/23/2022 4:30 PM - 6/26/2022 1:00 PM EDT

**Where** Chattanooga Convention Center 1 Carter Plaza Chattanooga 37402



### TO REGISTER

- Sign in with your username and password (or create a new account).
- Click "Register Myself" button.
- Select a "Registration Option."

If you are attending – help out your  
Newsletter editor:

- Take some photos
- Write up your favorite event --briefly
- Send to [paulinebayne@comcast.net](mailto:paulinebayne@comcast.net)

If you need help, please contact us by phone M - F,  
8:30AM to 4:30PM (CST) at 651-484-9094 or 877-595-  
9094.



## **JUNE: Simultaneous In-Person and Zoom Meeting**

### **EVENT: Annual Wood Action**

We were pleased with our first IN-PERSON meeting at Wood Craft this month along with the successful simulcast on Zoom. After over two years of Zoom meetings, it was a joy for members to be together in person.

NOW IS THE TIME to gather your wood, carefully prepared of course, for the JUNE AUCTION at WOOD CRAFT.

Please BRING:

- Good Quality Wood –free from defects and flat on at least one side.
- Tools / Gadgets
- Accessories / Books



### **Quarterly Challenge**

- Every member is encouraged to attempt to replicate each month's demonstration program idea and submit the project for Show & Tell.
- As the "Quarterly Challenge," a random drawing will be held at the end of each quarter from the Show & Tell projects that reflect the demonstrations for those three months. The winner will receive a \$25 Woodcraft gift card.



## Turning a Clovis Bud Vase



1. Making the turning blank
  - a. The final bowl will be about 2 thirds in height as the blank diameter (12")
  - b. The glue up is in thirds and about 1 to 1 ½" thick
  - c. Use a single board for the outside thirds (cherry shown)
  - d. Use a different wood for the middle third
  - e. Attach a sacrificial piece of wood to form a tenon on what will be the back of the bowl.
  - f. The tenon should be long enough to allow the bowl to be cut off later and not risk hitting the chuck (about 1-2")
2. Turn a shallow bowl
  - a. Start on the back of the bowl to define shape
  - b. Move to the inside and remove about half the waste, leaving a tenon in the center (to allow reverse chucking to turn off the outside tenon)
  - c. Cut from the edge inward
  - d. Cut only about an inch at a time
  - e. Use your fingers to check thickness and profile
  - f. Confirm periodically with measuring tool
  - g. When make the last several final cuts, use a VERY light touch
  - h. Use very little pressure on the cutting tool
  - i. Hold the tool softly
  - j. Make sure it sharp
3. Cut the bowl in half, through the center of the middle third.
4. Glue halves together using lots of rubber bands to hold the halves together
5. Use a belt or disc sander to flatten the half bowl edge to be dead on flat.
6. Prepare the base
  - a. Use 1 ½" to 2" thick board and scribe the half bowl profile on it.
  - b. Cut the profile on a band-saw
  - c. Tape the base to the half bowl rim
  - d. Draw a center line
  - e. Mark the half bowl for cutting by drawing two lines going from the bottom center to the rim (2" in from the edges of the base)



## DEMO Handout: Dick Hoffmann

7. Cut the half bowl
  - a. Cut along the marked lines
  - b. Flatten the cut edges on a belt/disc sander
8. Cut the base block
  - a. Un-tape the base blocks from both cut sections
  - b. Draw lines 90 degree to the just cut edge and intersects the corner of the base
  - c. Cut both segments on a chop saw
9. Glue everything together
  - a. Glue base blocks together along with bowl segments
  - b. Use rubber bands to apply damping pressure
10. Turn the tube holder (For  $\frac{1}{2}$ " x 4  $\frac{1}{2}$ " tube)
  - a. Glue a collar onto a spindle blank
  - b. Drill a  $\frac{1}{2}$ " hole about 5" deep
  - c. Turn the spindle down to 1" in diameter
  - d. Turn decorative vase lip is about 1  $\frac{1}{8}$ " in diameter
11. Prepare the vase
  - a. Sand the base flush with the vase sides
  - b. Flatten the bottom and make sure the vase stands vertical
  - c. Flatten the top and carefully drill a 1" hole
12. Glue the tube holder into the 1" hole and finish



blocks

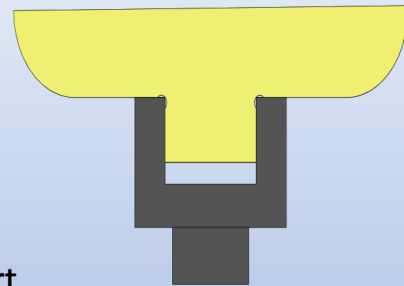


## Safety Message – Dick Hoffmann

### Turning Speed Safety

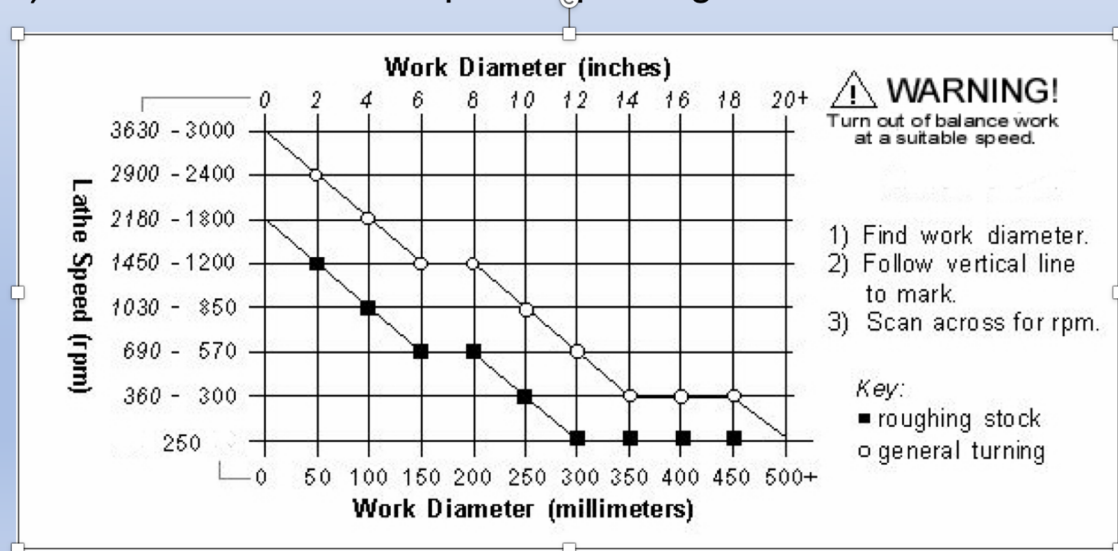
#### Safety Issues Speed

- Too Slow Speed Can:
  - In roughing can create catches
  - Generate splinters and tear-out
- Too Fast Speed Can:
  - Cause weak or cracked wood to come apart
  - Cause a Tennon to break because of high torque
    - Having jaws registered against the bowl and releasing the junction between bowl and tennon, reduce the risk of breakage
  - Cause weak joints in segmented work to break apart
- Turning as fast a recommended will produce the smoothest, cleanest cuts that require less sanding



#### Turning Speeds

- a) The larger the diameter ... the slower the speed
- b) Voids in the wood requires higher speeds
- c) The chart below show optimal speeds given diameter







## What's Happening at the Ranch this Month?

**May** at the Ranch provided our students with the opportunity to further their wood turning skills. Our beginner students completed votive candle holders and our intermediate students began work on acorn boxes. The boxes proved to be an intricate challenge for the kids yet everyone was able to finish the lid to the box and mate it to the body of the acorn. Next month they'll be able to finish the project. May brings the end of the winter/spring semester and in June we'll continue with the Summer sessions (same schedule since our program runs year round).



The shop building addition at the Ranch should be completed for next month's Workshops. That means that our long-awaited restroom facilities and running water will be available to the instructors and students.

If you have questions about our SMWTS educational program at the Ranch, contact Bob Law - [rockytopbob1@gmail.com](mailto:rockytopbob1@gmail.com)

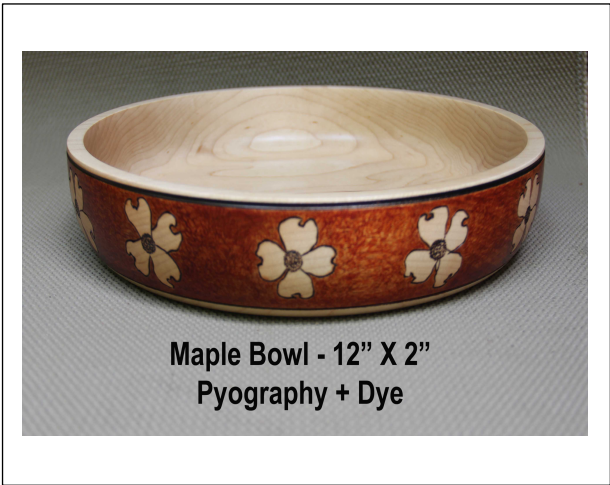
# Show & Tell



*Paul Elert*

*Segmented Hollow Form*  
Woods: Wenge, Bloodwood, Holly, and Maple; 464 pieces!  
6.5" tall x 9" wide

*Tom Knight*



Maple Bowl - 12" X 2"  
Pyrography + Dye



Maple Bowl - 12" X 2" - Pyrography + Paint



Maple + Oak Lid  
8" X 5"



Spalted Maple + Walnut  
Bud Vase W/Glass Insert  
11" 3"



## Show & Tell



*Jake  
Niedling*

Hummingbird House  
For the Cumberland Club  
Challenge

Hand-Threaded



Walnut Burl blocks  
available at Wood  
Craft for \$12-\$15

Finial Christmas Tree Topper  
3" globe, hollowed  
8-9" finial  
Spray lacquer, 5-6 coats, buffed



*Gordon Sloane*

6" Spalted Maple Bowl  
Sanded to 800 grit.  
Finished with Yorkshire Grit,  
nothing else needed for a  
beautiful finish



*Terry Weeks*  
Flame Box Elder and  
Quilted Maple  
Is it 3 feet tall?  
Hollowed to about  
1/4 thickness

